

## What's New in eZcat 6.5

### Introduction

This document explains the newest features in **eZcat** and **eZcat Pro** version 6.5. In eZcat, your preferences for exporting records are now remembered for your next export. In eZcat Pro, you can now create more than one local holdings configuration. There are new options in bulk editing records, and you can now combine MARC records with the same ISBN in an import file and split a Call Number subfield into multiple subfields.

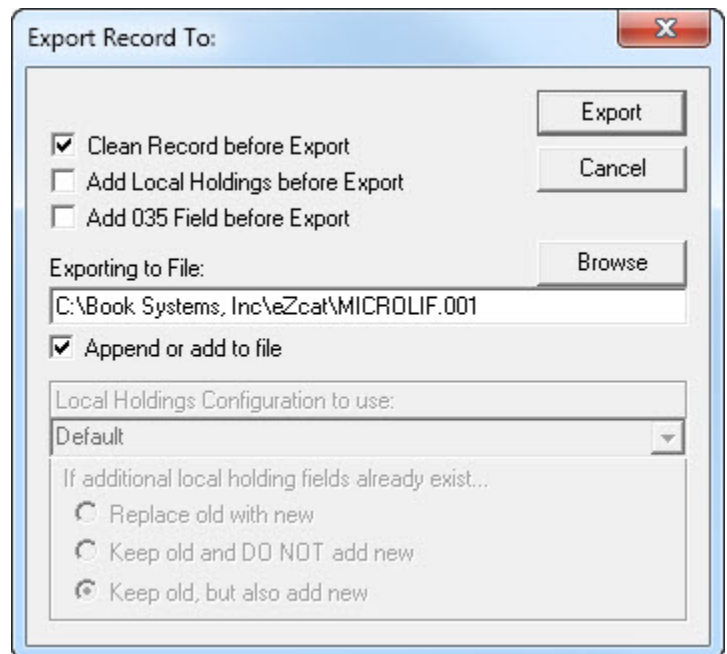
---

### eZcat and eZcat Pro Features

#### Save Your Export Preferences

When you export MARC records, eZcat remembers your preferences so that you don't have to set them each time.

1. Select records to export.
2. Click **MARC**, then **Export/Add**, and then **Export...** or **Export to...** from the menu to open the **Export Record To:** dialog box.
3. If needed, modify any of the following options:
  - **Clean Record before Export**
  - **Add Local Holdings before Export** (Enables configuration options.)
  - **Add 035 Field before Export**
  - **Append or add to file**
4. Click **Export** to apply your preferences and export the records.
5. The next time you export, your preferences are retained so you can quickly export again.



---

### eZcat Pro Features

#### Create Multiple Local Holdings Configurations

When adding local holdings fields to records, you can establish different settings to apply when exporting records, adding to printing queues, and more. This might be useful if you want one configuration for books and another for other material types or if your library has different branches with different needs. Establish configurations using the **Admin** menu; then, choose a local holdings configuration to use any time you are adding holdings fields to a record.

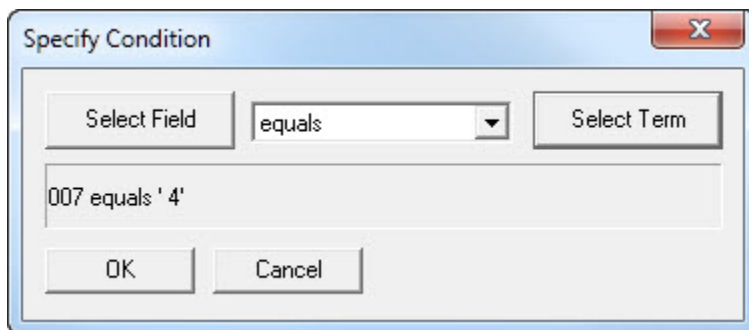
## What's New in eZcat 6.5

1. Click **Admin\Configure Local Holdings...** from the menu.
2. The **Local Holdings Configurations** dialog box opens, listing existing configurations. To establish another, click **New Config**.
3. The **Local Holdings Configuration Wizard** opens, where you can name the configuration, choose what field it is stored in, and more. Follow the wizard's instructions to specify parameters for the configuration (see the Help files for more information about each):
  - Indicators
  - Location subfields
  - Call Number generation
  - Numbers and codes
  - Study program information
4. Click **Finish** to save the configuration.
5. When you add items to a print queue, export records, or modify local holdings, you will be prompted to choose a local holdings configuration to apply to the records.

### Add Indicator Conditions When Bulk Editing/Validating Records

When establishing a bulk edit rule set or validation rule set, you can add a condition to look for a specific indicator in the record. The steps below are specific to bulk editing, but the steps for both options are similar.

1. Click **Admin\Bulk Edit Rule Sets...** from the menu.
2. The **Bulk Edit Rule Sets** dialog box opens listing the existing rule sets. Click **New Rule Set** to create an additional one.
3. The **Add/Edit List of Bulk Edit Rules** dialog box opens. Click **Add Rule** to open the **Add/Edit Single Bulk Edit Rule** dialog box.
4. Click **Add Condition** to open the **Specify Condition** dialog box.
5. Click **Select Field**, and then click **MARC Indicators**.
6. Select a tag where the indicator is located, and click **OK**.
7. Click **Select Term**, and click **Text**.
8. Enter up to two digits to specify the indicator you want to find. Entering a space as the first digit works like a wildcard. Click **OK**.
9. Add other conditions, filters, and actions to the rule as needed. See the Help files for more information.
10. Click **OK** to save the rule. Click **OK** to save the rule set.
11. When you use the **MARC\Bulk Edit...** option from the menu, you can select your new rule set to apply to the records.



## What's New in eZcat 6.5

### Combine MARC Records with the Same ISBN

When you import a file that has duplicate copies of records with the same ISBN, you can easily combine those into one record with multiple holdings.

1. Right-click the import file, and click **Combine MARC Records** from the submenu.
2. A dialog box displays telling you how many records were combined. Click **OK** to dismiss the dialog box.
3. Right-click the import file, and click **Retrieve # Records** (based on **Retrieve Preferences**). A dialog box displays telling you how many records were retrieved. Click **OK** to dismiss the dialog box.

### Split Call Number

You can divide a record's Call Number after you have added local holdings. Using the **Split Call Number** option tells eZcat to divide the classification subfield into two or more subfields if there are spaces in the existing subfield text. The fields modified are determined based on the field/subfield preferences in the currently applied local holdings configuration. If there are multiple spaces between Call Number information, multiple item part subfields will be created to contain the information.

For example, in a Local Holdings Configuration set to store information in field **852** and subfields **h** and **i**, the **h** subfield is split into subfields **h** and **i** in records where there is a space in the subfield. See the images below for examples of how records display before and after splitting.

<i>Before Splitting</i>					<i>Before Splitting</i>				
852	1	1	h	823.914 Jam	852	1	1	h	823.914 Jam 2011
			p	1				p	1
<i>After Splitting</i>					<i>After Splitting</i>				
852	1	1	h	823.914	852	1	1	h	823.914
			i	Jam				i	Jam
			p	1				i	2011
								p	1

1. Click to select the record in the left pane. You can select multiple records if needed.
2. Right-click, and in the menu that opens, click **Split Call Number**.
3. If the classification subfield contains spaces, the subfield is divided into two or more subfields.



## What's New in eZcat 6.5

---

### Resources

Help is an excellent tool for finding detailed steps on how to use any feature or form in eZcat. Click **Help\Help Topics** from the menu at any time to find a topic to assist you with your current task. The **What's New in eZcat?** topic lists all of these new features and provides links that cover them in detail.

You may also use the Table of Contents, Index, Search, and Glossary features to find information on any number of topics in Help.

The **Getting Started Guide** is also available by clicking **Help\Getting Started Guide** from the menu. It contains the most important setup steps for new users.

---

### Product Support

If you have questions about new features in eZcat/eZcat Pro that this document or our additional resources don't answer, please call Book Systems' Technical Support Staff at (888) 289-1216 or send an e-mail to [support@booksys.com](mailto:support@booksys.com). Business hours are Monday through Friday, 7 a.m. – 7 p.m. Central Standard Time.

Book Systems, the Book Systems logo, eZcat, eZcat Pro, Atrium, Booktracks, Concourse, and all program logos are either trademarks or registered trademarks of Book Systems, Inc. All other products listed are trademarks or registered trademarks of their respective owners. Book Systems believes the information in this document is accurate as of its publication date. Such information is subject to change without notice and is subject to applicable technical product descriptions. Book Systems is not responsible for inadvertent errors. © 2015 Book Systems, Inc. Huntsville, AL 35816. All rights reserved

